

# Eco-intelligent Solutions



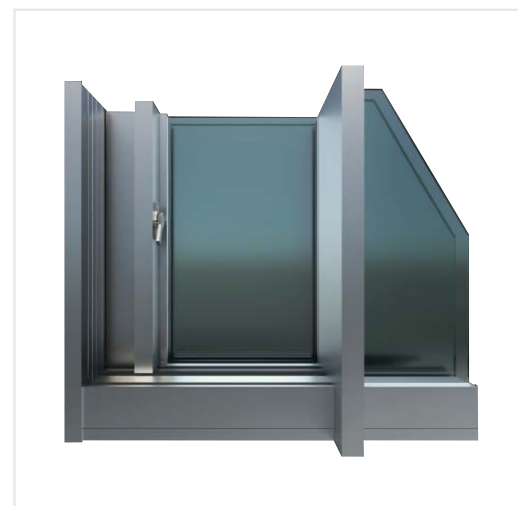
Change Your Thoughts & Transform Your Life



We lead tomorrow

**THORMALINE**<sup>®</sup>  
aluminium private limited

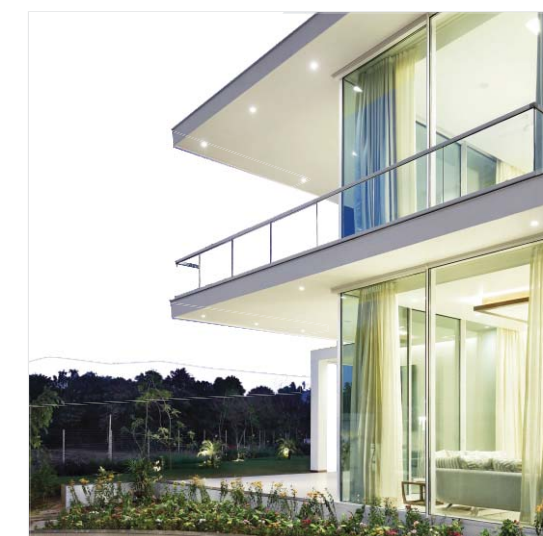
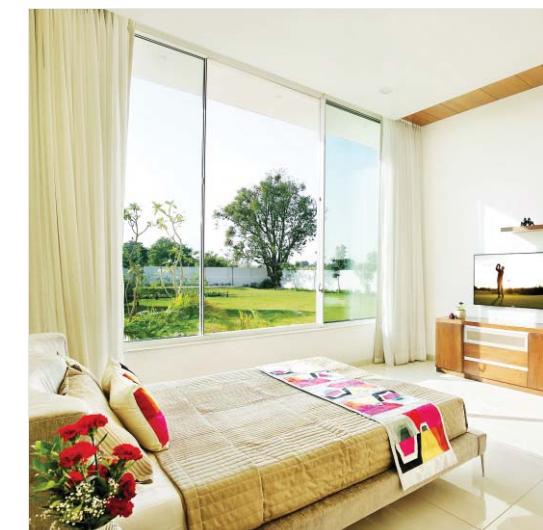
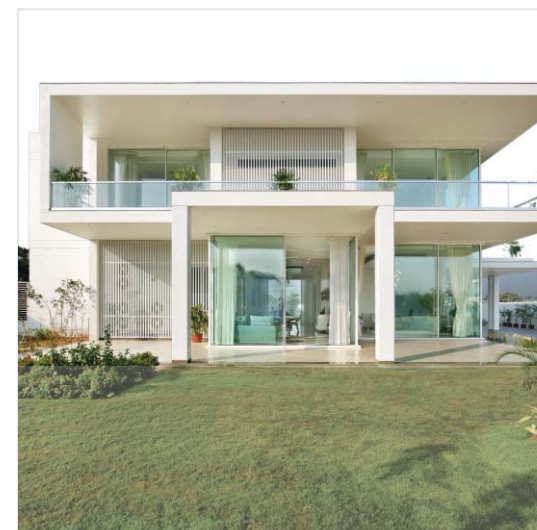
## SIMPLICITY IN IT'S PUREST FORM THERMALINE CLEARVIEW



Get the best panoramic view with ClearView minimal aluminium sliding system.

- Vertical track along with handle section is 80 mm (face width)
- Interlock face width is only 20 mm
- Top & bottom track 53 mm (face width)
- Maximum shutter size = maximum glass panel available in the market
- Windload up to 3.6 kPa
- Maximum load per shutter upto 700 kgs
- Provision for glass panels from 8 mm to 50 mm
- Multi-point locking
- Reverse interlock available. (center opening with multi-point locking)
- Minimal effort & smooth operation for large shutters
- Option of floating 90° former shutters available
- Any number of tracks possible thanks to thermal-break design
- Energy saving & excellent noise insulation
- Made for indian conditions
- Shutter top and bottom is hidden inside the track. hence, the only true minimal system available in the indian market

This system is showcased in awards winning bungalow project in Vadodara, Gujarat



Shutter size - 2.55 m (width) \* 3.85 m (height)

Glass panel - 17.52 mm laminated glass + 20 mm air gap + 8 mm glass

### Featured in

- Better interiors magazine june 2017 issue
- Mondo arc magazine issue #16
- Home review june 2018 issue

## BRING THE OUTDOORS IN THERMALINE CLEARVIEW LT



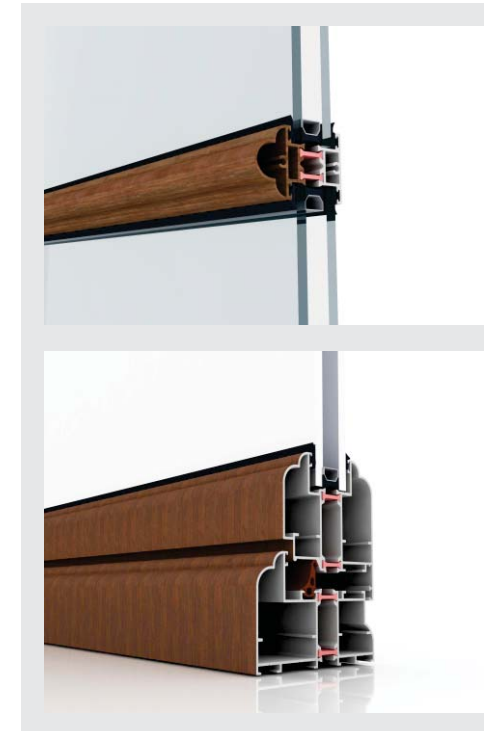
ClearView LT minimal aluminium sliding system is the perfect solution for maximising space and minimising the barriers between the inside and the outdoors.

- Vertical track along with handle section is 55 mm (face width)
- Interlock face width is only 15 mm
- Top and bottom track 50 mm (face width)
- Maximum height supported by this system is 16 ft
- Windload up to 2.5 kPa
- Maximum load per shutter upto 320 kgs (tested rollers imported from europe)
- Provision for glass panels from 8 mm to 32 mm
- Multi-point Locking
- Minimal effort & smooth operation for large shutters
- Option of floating 90° corner shutters available
- Any number of tracks possible thanks to thermal-break design
- Energy saving, excellent noise insulation & economical
- Made for indian conditions
- Shutter top and bottom is hidden inside the track. hence, the only true minimal system available in the indian market

## THERMALINE SIGNATURE SERIES

### THERMALINE CASMENT:

- Provision for 13.52 mm & 25 mm glass panel
- Optional French type windows with Georgian bar
- 3 options of architraves
- System compatible of European hardware ( EURO groove)
- Design to withstand 1500 - 2500 pascals
- Maximum size of shutter 1200 mm x 2400 mm



### THERMALINE DOOR:

- Provision for 13.52 mm & 25 mm glass panel
- Optional French type door with Georgian bar
- 3 options of architraves
- All doors with threshold
- System compatible of European hardware ( EURO groove)
- Maximum size of shutter 1200 mm x 3200 mm

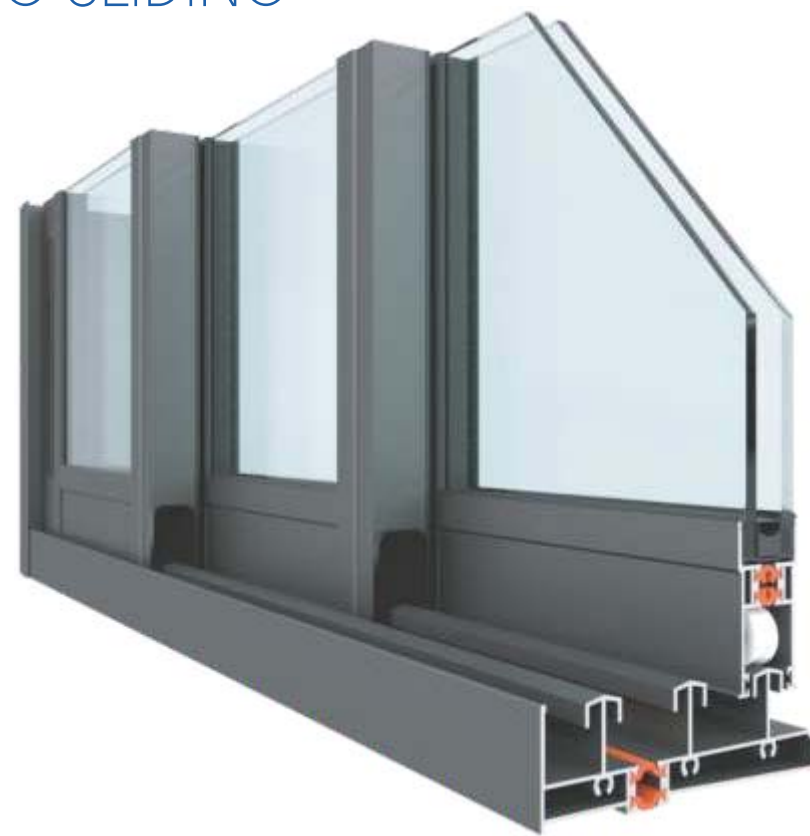


### THERMALINE SLIDING:

- Provision for 13.52 mm & 25 mm glass panel
- 2 track & 3 track provision
- 3 options of architraves
- All joints 90 degree & overlapping for increase strength and to avoid light infiltration
- System fully air tight and water tight
- Locking arrangement single / multi point with anti-false mechanism
- Design to withstand 1500 - 2500 pascals
- Maximum size of shutter 1500 mm x 3200 mm

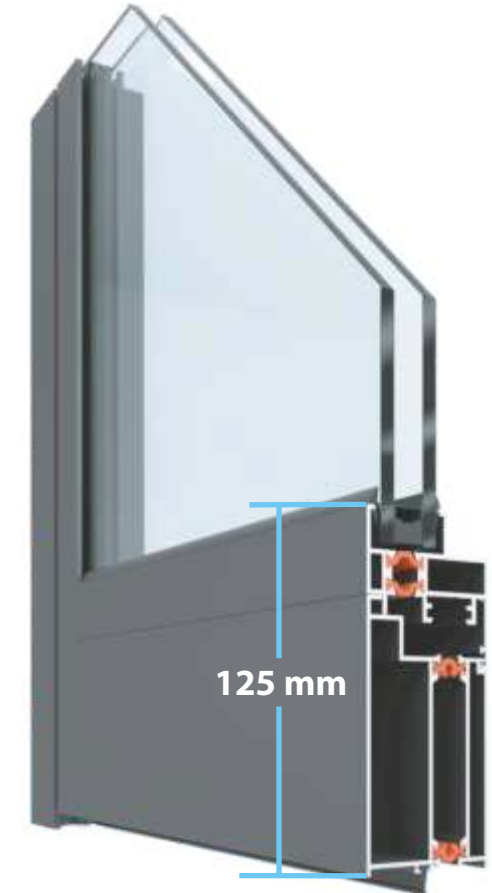
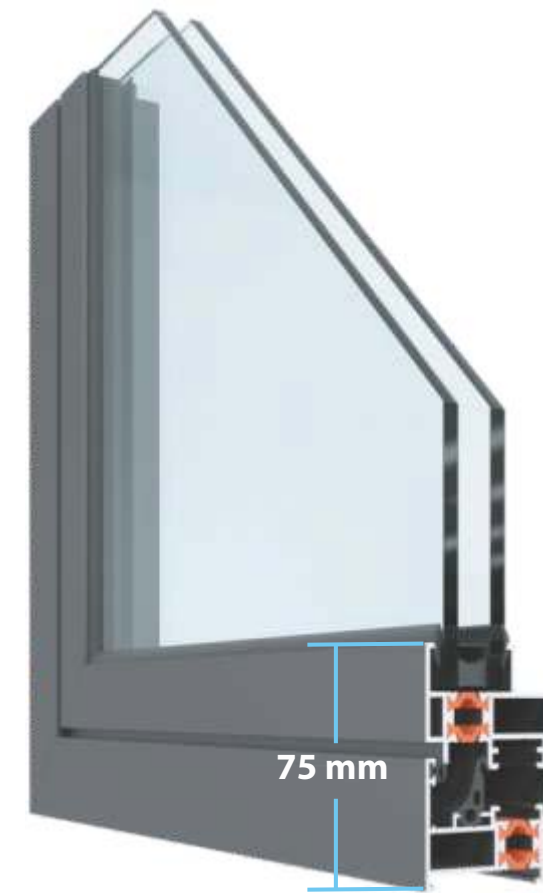


## THERMALINE ECO SLIDING



- Thermally broken aluminium profiles for better energy saving & sound insulation
- Bi-colour option
- 2 track & 3 track provision
- Provision for glass panels of 4 mm to 6 mm, 10 to 13.52 mm & 24 mm
- Central profile (Interlock) 35 mm wide
- All joints 90 degree & overlapping for increase strength and to avoid light infiltration
- System fully air tight and water tight
- Built-in track for fly mesh
- Provision of reinforce vertical profile for high wind load
- System compatible of European hardware
- Locking arrangement single / multipoint with anti-false mechanism
- Easy fabrication with minimal tools
- Maximum size of shutter 1250 mm x 2800 mm
- Maximum Load per shutter upto 180 kgs. (tested rollers imported from Europe)

## THERMALINE ECO CASEMENT



- Thermally broken aluminium profiles for better energy saving & sound insulation
- Bi-colour option
- Provision for Glass panels of 4 mm to 6 mm, 10 to 13.52 mm & 24 mm
- System compatible of European hardware (EURO groove)
- Sleek profiles only 75 mm together with outer frame & sash
- Provision of 125 mm high profile for door bottom with gasket seal
- Maximum width of shutter 900 mm

## THERMALINE VERTICAL WINDOW



- Economical vertical sliding with double sash
- Tilt in top & bottom sash for easy cleaning
- Windows fully air tight & water tight
- Lock automatically engages when window is fully closed
- Maximum 900 mm x 1500 mm without spring balance
- Provision of spring balance for large span sash
- Provision for Glass panels of 4 mm to 6 mm, 10 to 13.52 mm & 16 mm DGU

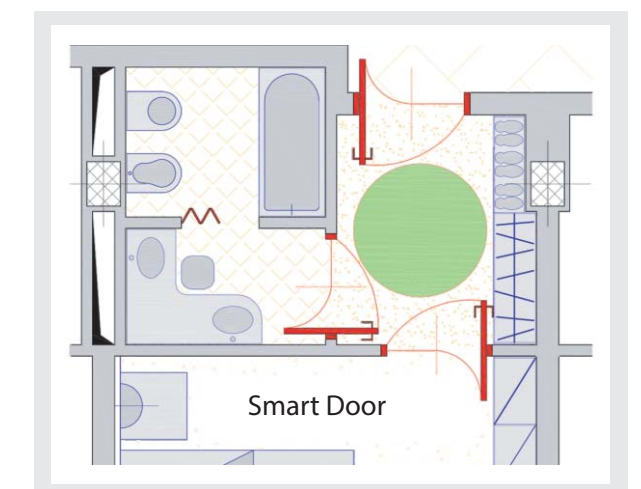
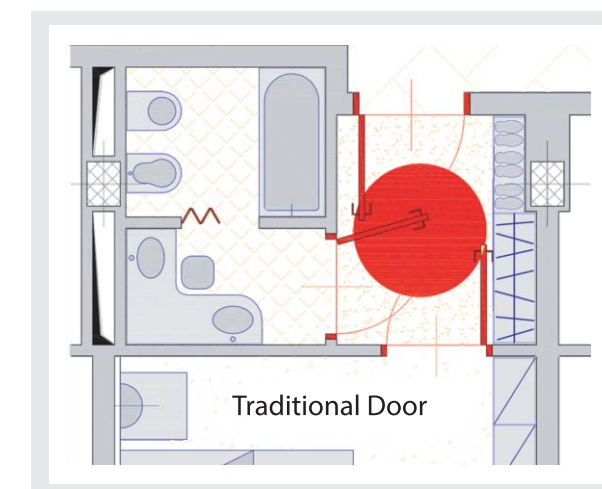
## THERMALINE SMART DOOR

**THERMALINE** Smart Door changes the concept of door, by reducing swing-space requirement by 50%. Thanks to the innovative movement, the door can be opened from either side, or on just one side with a stop.

**THERMALINE** Smart Door will swing to the side as it moves in or out, ending up flush and perpendicular with the adjacent door frame.

**THERMALINE** Smart Door minimizes space requirements, optimizing usability of even the smallest rooms.

- Larger Wardrobes
- Spacious Bathrooms
- Optimized Kitchen Spaces
- More Convenient Hallways
- Better Accessible Public Facilities



**Pro** **files**  
SYSTEMES

MARAI



L'alu naturellement

### Minimalism in aluminium design

- Sliding upto 4 tracks with 8 shutters
- Maximum size 1200 mm \* 2500 mm per shutter
- Maximum load per shutter up to 150 kg
- Single or insulating glazing from 6 mm to 20 mm
- Interlock face width of only 25 mm
- Rolling noise damper (Patented model)
- One-piece handle cum lock with anti-false mechanism
- Sliding with straight and clean forms
- Significant daylight : Minimized aluminum surfaces

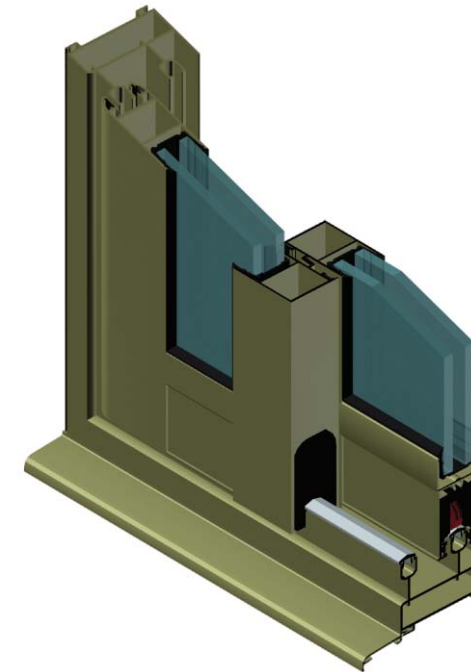


Laquage Garanti



**Pro** **files**  
SYSTEMES

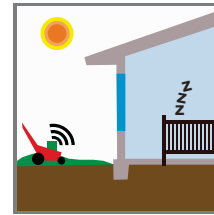
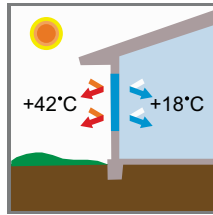
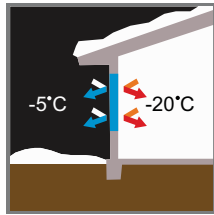
TURIS



### Minimalism in aluminium design

- Sliding upto 4 tracks with 8 shutters
- Maximum load size 2000 mm \* 3000 mm per shutter
- Maximum load per shutter up to 250 kg
- Single or double glazing up to 26 mm
- Large dimensions available used overseas in clonic zones
- Top quality slide thanks to the rail system assembled on a flexible seal
- Possibility of integrating a louvre window into a panel thanks to a modern design integration profile.
- Pocket door system with up to 4 panels on 2 rails
- Available in all colours exclusive to Profils Systèmes : Terra Cigala®, Maohé®, Eclats Métalliques®, Profils Color®, Terre de Matières®
- 25-year colour resistance warranty

Energy costs and noise pollution continue to rise - there is nothing that we can do about it. You can however switch to **THERMALINE** products to stop your energy consumption from spiralling and for optimum comfort.



Insulation against



Noise



Dust



Rain



Pollution



Rising Energy Costs

We also provide customized designs for Aluminium sliding & Casements Systems Which are Energy Efficient & Economical.

**THERMALINE** products save up to 60% energy as they do not allow heat to enter while preserving the temperature of the room for much longer. Thus, a reduction in air conditioning costs and savings for the owner.

**THERMALINE** products are perfectly designed to reduce the transmission of sound. Proper choice of glass and a professional installation of the system ensures maximum peace of mind and high comfort.

**THERMALINE** products also means making a choice that respects the environment around us as aluminium, unlike UPVC, has a great resistance to weathering and therefore greater durability as well as being a fully recyclable material.

Another exceptional advantage of **THERMALINE** products over UPVC is the unlimited availability of finishes with Bi-colour option, so as to ensure the satisfaction of every need and taste.

#### HEAD OFFICE:

Dasalad wadi, Lakkadpitha road,  
Vadodara-390001. Gujarat, India.  
Ph. : +91 265 2427813  
Ph. : +91 265 2410080  
Email id : info@thermaline.in

#### BRANCH OFFICE:

70 Raja Industrial Estate Near  
Saidham p k road Mulund West  
Mumbai 400080  
Ph : +91 022 25919792

#### FACTORY:

B P Patel Estate,  
Near Navdurga Mata Temple,  
Off NH : 64  
Dasrath 391740, Dist: Baroda,  
Gujarat, India.  
Ph. : +91 93779 76762

Website : [www.thermaline.in](http://www.thermaline.in)